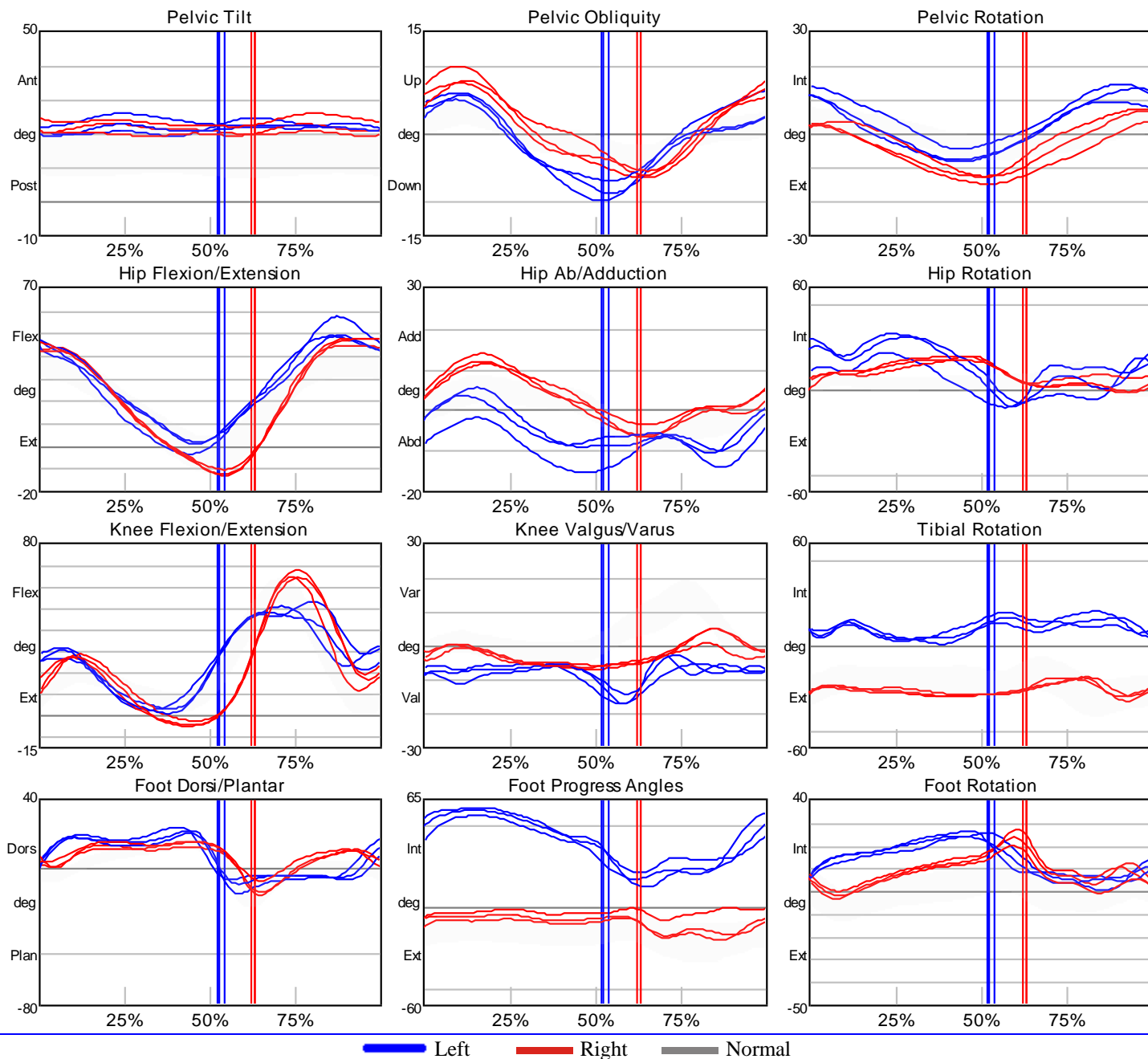




Kinematics



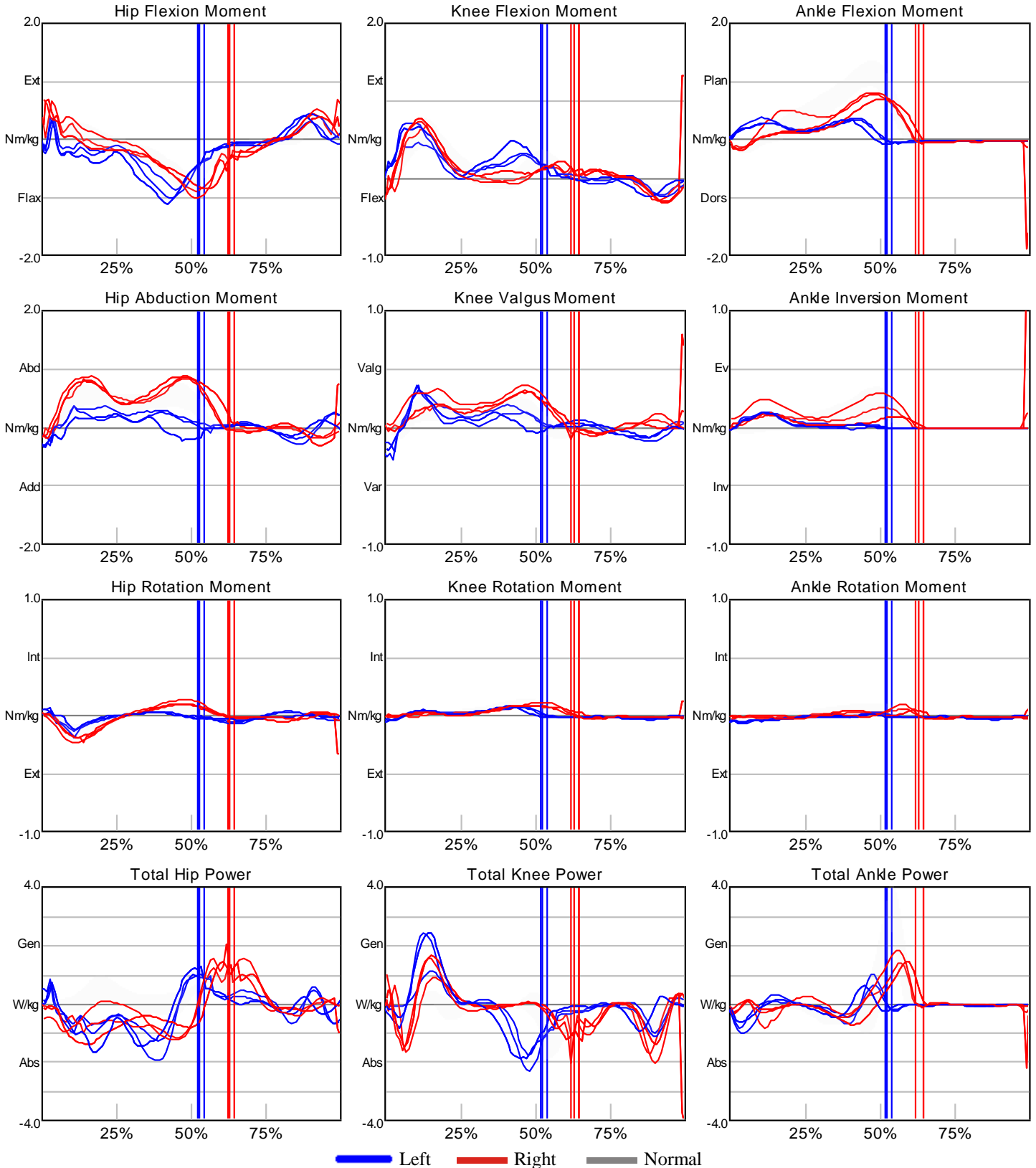
Trials A, B, C	Left	Left	Left	Right	Right	Right	Normal
Cadence	144 steps/min	140 steps/min	166 steps/min	157 steps/min	140 steps/min	166 steps/min	125 ± 15.1 steps/min
Double Support	18.0 %	14.6 %	17.2 %	18.5 %	17.5 %	23.0 %	22.0 ± 2.99 %
Foot Off	52.0 %	52.4 %	54.0 %	63.0 %	62.1 %	63.2 %	61.1 ± 2.12 %
Single Support	34.0 %	37.9 %	36.8 %	44.6 %	44.7 %	40.2 %	39.1 ± 2.35 %
Step Length	0.41 m	0.39 m	0.41 m	0.38 m	0.36 m	0.34 m	0.57 ± 0.082 m
Step Time	57.0 %	53.4 %	56.3 %	46.7 %	46.6 %	43.7 %	0.49 ± 0.058 s
Stride Length	0.80 m	0.76 m	0.75 m	0.79 m	0.76 m	0.75 m	1.14 ± 0.16 m
Walking Speed	0.96 m/s	0.88 m/s	1.03 m/s	1.02 m/s	0.89 m/s	1.04 m/s	1.17 ± 0.100 m/s

Name: Sample Patient MR# 1212121

FIN# 34343434 Date: 2/2/2014 Trials: 4, 7, 11



Kinetics





Left EMG

Right EMG

